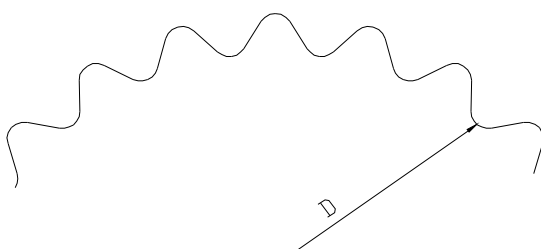
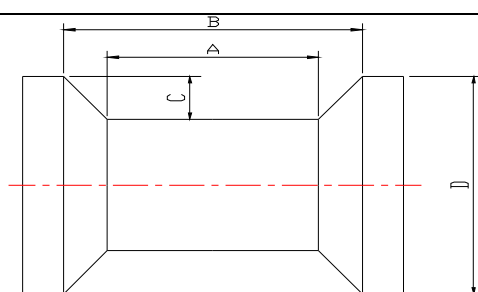
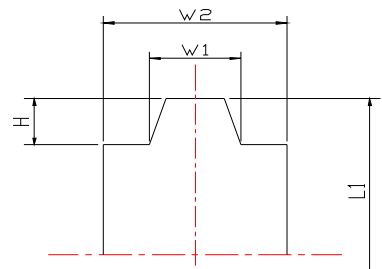
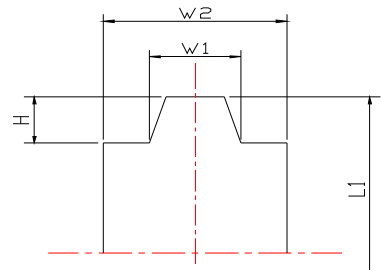
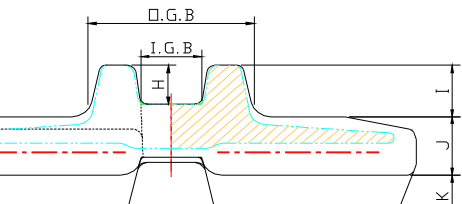


Rubber Track Requirement Sheet

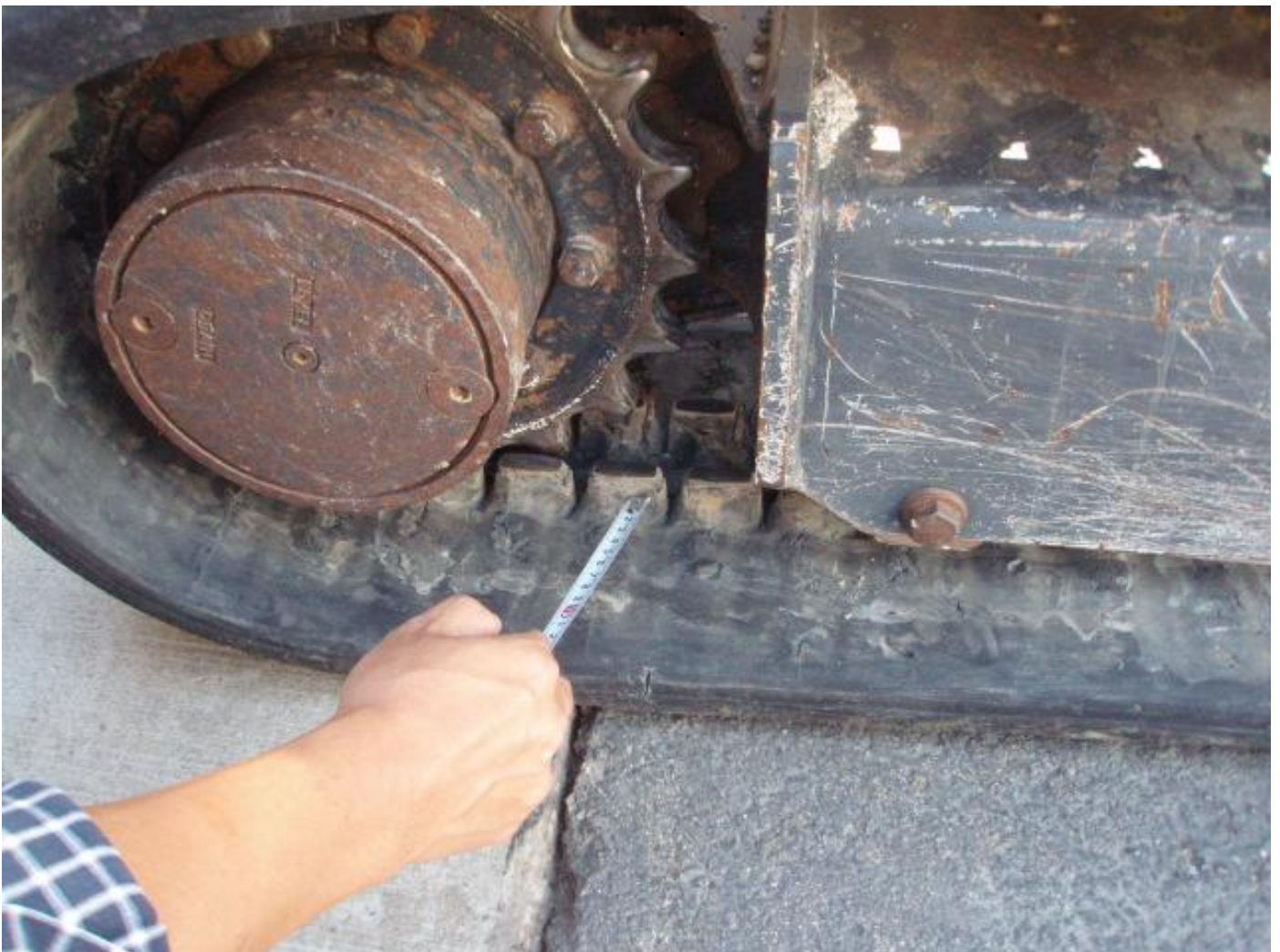
Date : . . .

1. Distributor name :		2. Customer name:	
3. Address :			
4. Machine category : (ex : Excavator, Compact Track Loader, Horizontal Directional Drill, Stump Cutter, etc.)			
5. Machine maker : (ex : Doosan, Volvo, Terex, Takeuchi, DitchWitch, Boxer, Astec, Vermeer, etc.)			
6. Full machine model # on the plate of machine, not on the machine : (ex : SK35SR-3, ECR88, TC50, TB38FR, SK650, 532DX, DD-3238, SC60TX, PC35MR-2etc.)			
7. Maximum travel speed : (km/h, mph)		8. Operating Weight : (ton , lbs)	
9. Ground pressure : (kPa, psi)		10. Traction power :	
11. # of sprocket teeth : EA			
12. Thickness of sprocket : (mm , inch)			
13. D(Diameter of sprocket) : (mm , inch)			
14-1. Roller Type : C-2 , C-3 , I-2 , I-3			
A :			
B :			
C :			
D :			
14-2. Roller Type : C-1 , I-1			
W1 :			
W2 :			
L1 :			
H :			
15. Idler :			
W1 :			
W2 :			
L1 :			
H :			
16. Rubber Track size : W x L x P			
O.G.B :		I.G.B :	
H :		I :	
J :		K :	

Width : 300mm



Should count links if there is no size mark and measure pitch with tape measure or caliper



Measure the pitch between the same point of link.





Measure OGB of the track



Measure the thickness of idler





Model name on the machine(27C) is mostly different from the real name on the plate of the machine.
So need to doublecheck the model name on the machine and the plate.



Measure the diameter of sprocket(D)



Count the quantity of sprocket teeth



Mark of maker or distributor like Bridgestone, McLaren, HXRT

